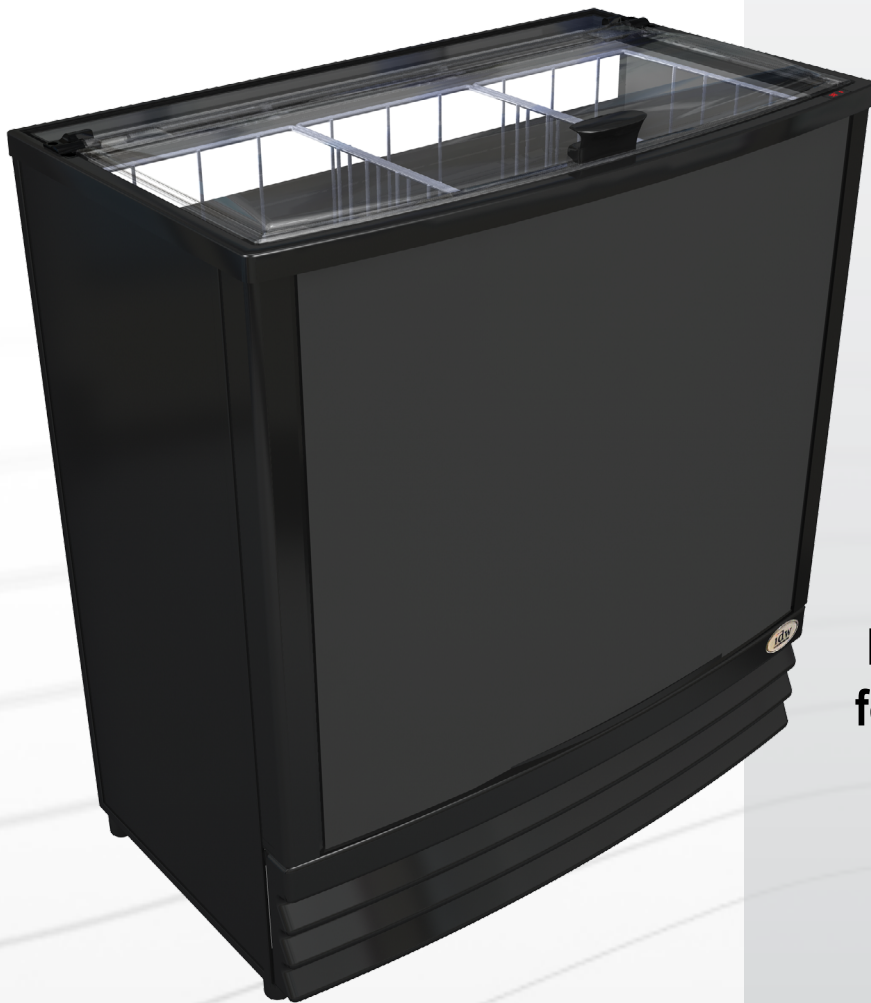


G-SERIES COOLERS

Instruction Manual

G-60e

THE TRIO IMPULSE COOLER



Manual is for the
following models:

G-60e-N14NF

G-60e-N14NG

G-60e-N14NI

The **Trio**
IMPULSE COOLER



Manual is for the following models:
G-60e-N14NF
G-60e-N14NG
G-60e-N14NI

Instruction Manual



FOR YOUR FUTURE REFERENCE

- This easy-to-use manual will help you get the best use of your cooler.
- Remember to record the model number and the serial number. This information can be found on the inside of your cooler.
- Keep your receipt with this manual for future warranty service.

TABLE OF CONTENTS

Parts and Identification2

Safety Instructions3

Installation.....4

Electrical Requirements4

Start.....5

Light Control.....5

Maintenance5

Cleaning.....5

Light Replacement.....8

Moving the Cooler.....8

Drip Pan8

Tension Rod Replacement9

Lid Replacement 10

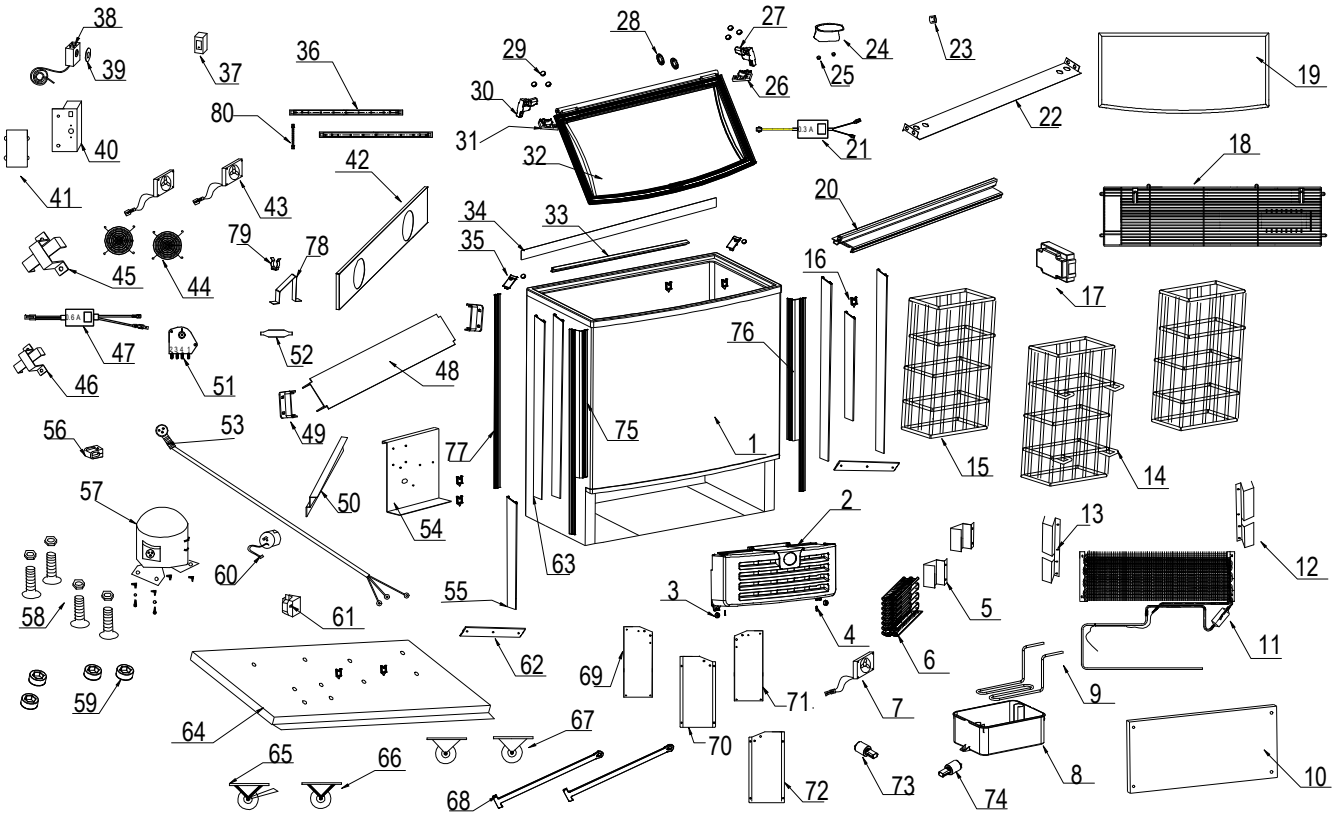
Interchangeable Graphics 11

Troubleshooting 13

Specifications..... 13

Circuit Diagram..... 14

PARTS & IDENTIFICATION



- | | | |
|------------------------------------|--------------------------------|------------------------------------|
| 1. Main Cabinet | 28. Hinge Gasket (2) | 55. Trim Piece (top left) (2) |
| 2. Front Grill | 29. Hinge Cover (8) | 56. Plastic Clip |
| 3. Front Grill Bracket (2) | 30. Hinge Cover (top left) | 57. Compressor |
| 4. Self-tapping Screw (2) | 31. Hinge Cover (bottom left) | 58. Leveling Foot (4) |
| 5. Electrical Wire Tray (2) | 32. Cooler Lid Set | 59. Foot Sleeve (4) |
| 6. Condenser | 33. Graphic Holder (back) | 60. Overload Breaker |
| 7. Condenser Fan | 34. Canopy Board | 61. Starter Relay |
| 8. Drip Pan | 35. Side Graphic Holder | 62. Graphic Frame (top) (2) |
| 9. Condensate Coil | 36. LED Light (2) | 63. Trim Piece (top back) (4) |
| 10. Evaporator Baffle | 37. Light Switch | 64. Compressor Panel |
| 11. Evaporator Set | 38. Thermostat | 65. Swivel Castor w/ Lock |
| 12. Bracket Baffle (right) | 39. Thermostat Indicator | 66. Swivel Castor |
| 13. Bracket Baffle (left) | 40. Thermostat Box | 67. Directional Castor (2) |
| 14. Basket (middle) | 41. Thermostat Box Cover | 68. Tension Rod (2) |
| 15. Basket (side) (2) | 42. Baffle of Inner Fan | 69. Tension Rod Box (bottom left) |
| 16. Wires Clip (7) | 43. Inner Fan (2) | 70. Tension Rod Box (top left) |
| 17. Junction Box Set | 44. Fan Bar (2) | 71. Tension Rod Box (bottom right) |
| 18. Rear Compartment Grill | 45. Transformer Box 1 | 72. Tension Rod Box (top right) |
| 19. Gasket | 46. Transformer Box 2 | 73. Damper (left) |
| 20. Plastic Graphic Frame | 47. Transformer (0.6A) | 74. Damper (right) |
| 21. Inner Light Transformer (0.3A) | 48. LED Light Cover | 75. Trim Piece (bottom left) |
| 22. Inner Fan Baffle Bracket | 49. LED Light Holder Cover (2) | 76. Trim Piece (bottom right) |
| 23. Wire Sleeve | 50. Wire Tray Bracket | 77. Trim Piece (bottom back) (2) |
| 24. Handle | 51. Defrost Timer | 78. Dry Filter Bracket |
| 25. #4 Spring Washer (2) | 52. Filter Drier | 79. Dry Filter Clip |
| 26. Hinge Cover (bottom right) | 53. Power Cord | 80. LED Panel Wires |
| 27. Hinge Cover (top right) | 54. Electrical Board | |

SAFETY INSTRUCTIONS

When using this appliance, always follow the basic safety precautions:

1. Read the entire User's Manual before operating this appliance.
2. Use this appliance only for its intended purpose as described in this User's Manual.
3. This cooler must be properly installed in accordance with the installation instructions before being used. See grounding instructions on page 4.
4. IDW requires that a dedicated circuit be used for the unit. Failure to do so voids warranty.
5. Never unplug your cooler by pulling on the power cord. Always grasp the plug firmly and pull it straight out from the outlet.
6. Unplug your cooler before cleaning or making any repairs. **Note: If for any reason this product requires service, we strongly recommend that a certified technician perform the service.**
7. Immediately repair or replace all electrical cords that have become frayed or otherwise damaged. Do not use a cord that shows cracks or abrasion damage along its length, the plug or the connector end.
8. Do not operate or store your cooler near or around explosive fumes, gasoline or other flammable vapors and liquids.
9. Do not use flammable liquids to clean unit.
10. Setting the temperature control to the 0 position does not remove power to the light circuit, perimeter heaters, or evaporator fans.
11. Do not adjust the temperature control. The temperature control is factory set between levels 4 and 5 for maximum performance.

Please save these instructions!

DANGER!
Proper Disposal of the Refrigerator

PRE-CAUTION, NON-OPERATING COOLERS SHOULD HAVE:

1. Door removed.
2. Baskets kept in place in order to prevent any small child from climbing inside cooler.

FOR PROPER DISPOSAL OF COOLER: Distributors/retailers need to contact a qualified service technician:

1. To recover all refrigerant from the cooler
2. To remove the compressor or remove the oil from the compressor

Then the distributor/retailer can contact their local metal recycling center to pick up the remaining cabinet, shelves, etc. By law, disposal of hazardous wastes may be subject to fines and imprisonment under the provisions of the environmental regulations. For more information please visit: <http://www.epa.gov/osw/hazard/index.htm>

INSTALLATION

Ambient Environment

- Place cooler on an even surface to reduce vibration and noise.
- To transport, do not tilt the cooler beyond a 45 degree angle.
- Do not place cooler in direct sunlight or near any heat sources.
- Do not place cooler in environment temperatures that exceed 109°F.
- Do not place cooler in below normal temperatures.
- Do not place cooler in extreme humid environments, this may cause components to rust.
- Do not place cooler near constant running or splattering water, this may cause immediate damage to refrigeration system.
- Must allow at least 4” between rear of cooler and wall for proper ventilation and heat dissipation of cooler.
- Do not place furniture or other articles with sharp edges near the cooler in order to prevent damage to the glass door.

PREPARATION PRIOR TO OPERATION

Unpackaging

- Remove all packaging materials before using cooler.
This includes: foam pedestal, adhesive tape (used to fix accessories) and protective gaskets.
- **Cooler must remain unplugged in an upright position for 1 hour prior to use.**
- Clean the interior surface with a soft cloth and lukewarm water.
- Inspect cooler for concealed damage. Immediately file a claim with the freight carrier if there is damage. IDW is not responsible for damage incurred during shipping.

Electrical Requirements

- This model operates with either a 220-240v/50Hz power supply. Check the electrical outlet for proper voltage.
- Dedicate one outlet for the use of the cooler.
- Do not use an extension cord or any other multiple connectors as this can lead to compressor failure.
- If the cord is damaged, it must be replaced.
- For your safety, plug the unit into a grounded wall outlet. Please check with a certified electrician for details.

WARNING: Do not use extension cords.

WARNING: Compressor warranties are void if compressor burns out due to low voltage.

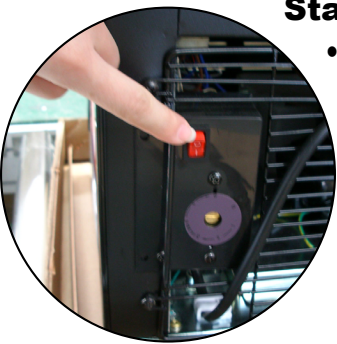
WARNING: Power supply cord should not be removed!

Leveling/Location

- Place unit in a well-ventilated area.
WARNING: Warranty is void if ventilation is insufficient.
- Unit must be leveled for proper operation, this will help prevent condensation.
- The cooler should be leveled front to back and side to side with a leveler.

Light Control

- The inside LED light is controlled by the light switch located in the rear left corner of the unit.



Startup, Operation and Temperature Adjustment

- Remove plug and cord from inside the lower rear of the cooler.
- Ensure that drain hose or hoses are positioned in the pan.
- For optimum performance, run cooler for 3 hours prior to stocking unit with product.
- Thermostat is preset to factory setting for maximum performance.

MAINTENANCE

Cleaning

- Unplug the cooler prior to cleaning.
- Unplug the cooler at the electrical outlet; never pull the service cord.
- Do not use sharp or pointed objects for cleaning.
- Do not spray water directly onto cooler, and do not use hard or steel brushes to clean the cooler.
- Clean the inside cabinet of the cooler with a clean, damp cloth or with mild soap.
- Avoid damaging the cooler by using only non-abrasive cleaning products. Do not use organic solvents, boiling water, washing powder or acid while cleaning.

If cooler's power will be off for a long period of time, unplug it, clean as instructed above, and keep door open until dry.

Condenser Maintenance

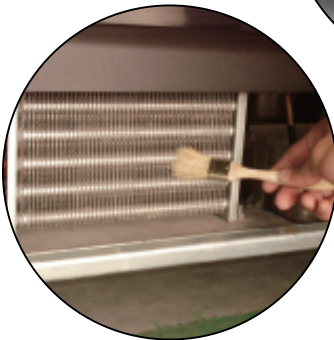
- It is essential to keep the condenser coils clean and free of dust and debris at all times.
- It is required to periodically clean the condenser coils with a soft bristle brush or vacuum-cleaner to properly maintain the refrigeration system.
- Failure to clean the condenser at regular intervals may cause failure of the refrigeration system and will void the warranty.



1 Using a small Phillips head screwdriver, remove the two screws from the top of the front grill as shown.



2 The front plastic grill can now be removed by pulling it forward.



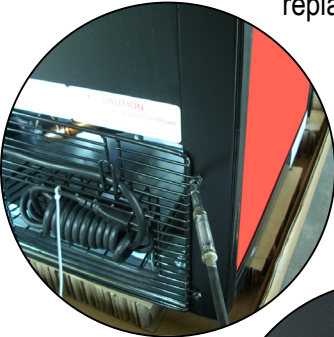
3 Using plastic bristle brush, carefully clean the coil being aware that coils can bend or be damaged if too much force is used.

4 Replace grill and utilize the Phillips screwdriver to tighten the screws into place.

Accessing Refrigeration Components

*** A CERTIFIED TECHNICIAN IS REQUIRED TO REPAIR ALL REFRIGERATION COMPONENTS FOR WARRANTY PURPOSES.**

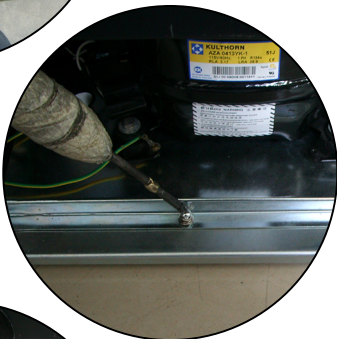
For convenient repair, the refrigeration components (compressor, evaporator, condenser, evaporation fan, condensation fan and filter) are designed using a split system; any component can be easily replaced. Replacement procedure is as follows:



1 Using a small Phillips head screwdriver, remove the four screws from the back grill as shown.



2 The back metal grill can now be removed.



3 Remove the two screws in the front.



4 Pull the drawer forward to access the system.



5 Reverse the above process to put the refrigeration drawer back into place.

Light Replacement

- Unplug the cooler before removing the LED lighting assembly.



1 Using a Phillips screwdriver, remove the two screws from the right light cover holder.



2 Gently remove the light cover and the right light cover holder.



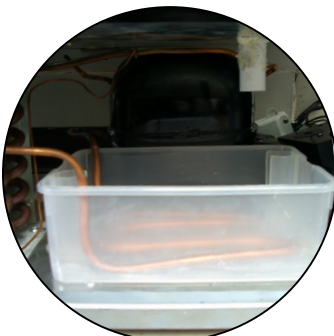
3 Using a Phillips screwdriver, remove the (2) screws securing the LED light strip.



4 Disconnect the LED light at the Quick Disconnect.



5 Reverse the above process to install a new LED light strip.



Moving the Cooler

- Remove all product from the unit.
- Secure all loose parts inside the cooler.
- Tape the door shut.
- Be sure to ship the cooler in an upright position.

Drip Pan

- During normal compressor cycle, water will drain into the drip pan and evaporate.

Replacing the Tension Rod

- Unplug the cooler before removing the LED lighting assembly.



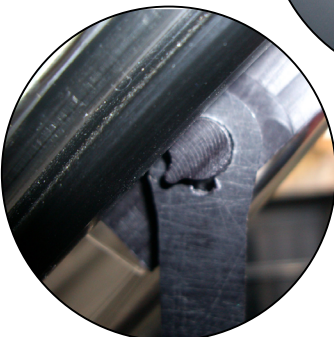
1 Remove the (6) screws from the left tension rod cover.



2 Remove the left tension rod cover.



3 Remove the tension rod from its pin (the rod will remain connected to the lid)



4 Align the rod so that the notch is aligned with the notch on the pin and it can now be pulled free.



5 Repeat steps (1-4) on the right side of the cooler.

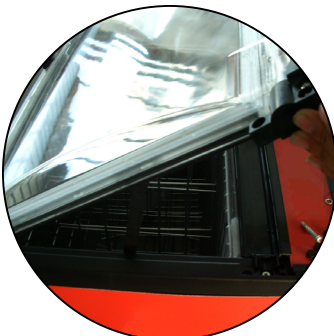
Replacing the Lid



1 Remove the (3) rubber caps covering the left hinge screws.



2 Remove the (3) screws in the left hinge.

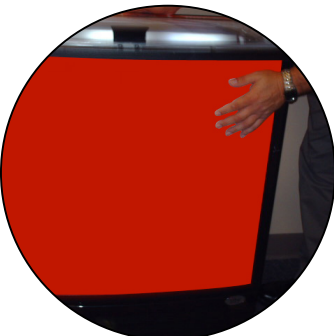


3 Repeat steps 1-2 on the right hinge.

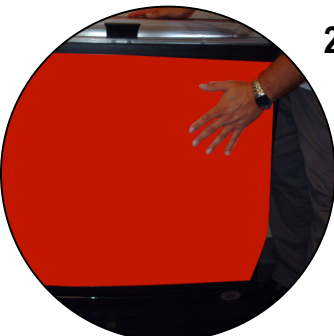
4 The Trio lid can now be lifted up from the Trio Cooler.

5 Follow steps 1- 4 listed in the “Tension Rod Replacement” Section to remove the tension rod and remove the Trio lid.

INTERCHANGEABLE GRAPHICS
Removing Trio Cooler Front Panel Graphic



1 Push the top left corner of the graphic down towards the opposite corner of the Trio Cooler.

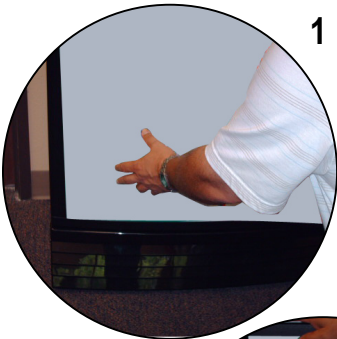


2 This will create a bubble in the graphic.



3 Continue to push until the graphic comes loose.

Replacing Trio Cooler Front Panel Graphic



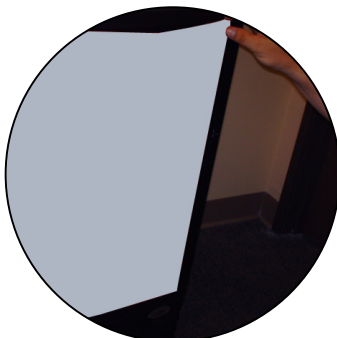
1 Place the new graphic in the bottom left corner of the trio cooler. Push the bottom of the graphic into the bottom graphic channel.



2 Feed the top of the graphic into the top left graphic channel.



3 The graphic will now bow outwards.



4 Feed the graphic into the left channel. Push the graphic completely into place on the left side of the cooler.



5 Finish installing the graphic by feeding the top right corner of the graphic into place.

TROUBLESHOOTING

If your cooler is not working properly:

- Check the electrical outlet for power, and check that the plug is properly inserted into the outlet.
- Check the circuit breaker for a tripped or blown fuse.
- Be sure that the condenser is free of dirt and dust.

If your cooler is making noise:

- Check that the cooler is level and on a flat surface.

If the compressor frequently turns on and off, check for the following:

- The room temperature may be higher than usual.
- The cooler door is completely closed.
- The door gasket is sealed correctly.
- Sufficient clearance around the cooler for airflow.
- Proper temperature settings.
- The cycling frequency will reduce when all of the cans reach the set temperature.

The following is not a malfunction:

- Murmur noises caused by the flow of refrigerant when each cooling cycle ends.

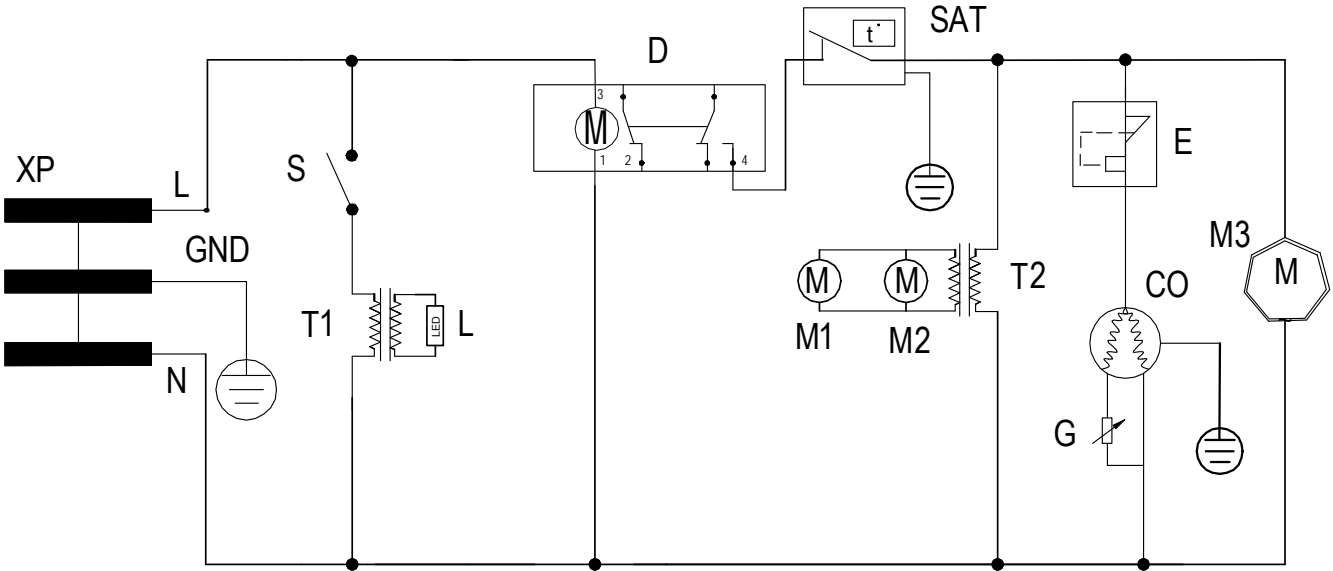
REFRIGERATION

- The G-60e (Trio Impulse Cooler) utilizes R134a refrigerant.

SPECIFICATIONS

Model:	G-60e (Trio Impulse Cooler)
Power Supply (V/Hz):	220-240v/50Hz
Dimension (WxDxH):	32" x 19" x 37"
Box Dimension (WxDxH):	34.4" x 21.4" x 39.5"

CIRCUIT DIAGRAM



- | | |
|----------------------|-------------------------|
| XP-PLUG | S-INNER LED SWITCH |
| T1-ADAPTOR | L-LED LAMP |
| D-DEFROST TIMER | SAT-TEMPERATURE CONTROL |
| T2-INNER FAN ADAPTOR | M1 M2-INNER FAN |
| E-OVERLOAD PROTECTOR | CO-COMPRESSOR |
| G-STARTING RELAY | M3-MOTOR FAN |



Innovative DisplayWorks, Inc.

990 N. Amelia Avenue, San Dimas, CA 91773

toll free: 877.307.2665

office: 909.447.8254

fax: 909.305.8756

www.idw-usa.com

To locate the distributor in your area go to: www.idw-usa.com/pages/distributors.html