

G-Series Cooler

Instruction Manual

G2.5

GS2.5

G3

GS3

Models:

GS-2.5-N234B

GS-2.5-W234B

GS-2.5-B234B

GS-2.5-P234B

GS-2.5-LN234B

GS-2.5-LW234B

GS-2.5-LB234B

GS-2.5-LP234B

GS-2.5-0234B

GS-2.5-L0234B

GS-2.5-2234B

GS-2.5-2W234B

GS-2.5-2B234B

GS-2.5-2P234B

GS-2.5-L2W234B

GS-2.5-L2B234B

GS-2.5-L2P234B

GS-2.5-A234B

GS-2.5-LA234B

GS-3-N234B

GS-3-W234B

GS-3-B234B

GS-3-P234B

GS-3-0234B

GS-3-2234B

GS-3-A234B

GS-3-2W234B

GS-3-2B234B

GS-3-2P234B



G-2.5



GS-2.5



G-3



GS-3



G-Series Cooler

Instruction Manual

G-2.5

GS-2.5

G-3

GS-3

Models:

- GS-2.5-N234B
- GS-2.5-W234B
- GS-2.5-B234B
- GS-2.5-P234B
- GS-2.5-LN234B
- GS-2.5-LW234B
- GS-2.5-LB234B
- GS-2.5-LP234B
- GS-2.5-0234B
- GS-2.5-L0234B
- GS-2.5-2234B
- GS-2.5-2W234B
- GS-2.5-2B234B
- GS-2.5-2P234B
- GS-2.5-L2W234B
- GS-2.5-L2B234B
- GS-2.5-L2P234B
- GS-2.5-A234B
- GS-2.5-LA234B
- GS-3-N234B
- GS-3-W234B
- GS-3-B234B
- GS-3-P234B
- GS-3-0234B
- GS-3-2234B
- GS-3-A234B
- GS-3-2W234B
- GS-3-2B234B
- GS-3-2P234B

I didn't find a G2.5 manual
so I don't have a list of
G2.5 models this manual
will cover.

<< I found a manual for
G3/GS3, so that's where I
got this list.

Table of Contents

Parts & Identification (GS-2.5)..... 4

Parts & Identification (G3/GS3) 5

Safety Instructions & Precautions..... 6

 Installation..... 6

 Electric Connection..... 6

 Start 6

Maintenance 7

 Cleaning..... 7

 Power Failure 7

 Moving the Cooler..... 7

 Drip Pan 7

Leveling..... 7

Shelving Installation 8

Troubleshooting..... 9

Specifications 10

Flammable Refrigerant Warnings 11

Switch Function..... 11

Circuit Diagrams (GS2.5) 12, 13

Circuit Diagrams (G3/GS3)..... 14, 15

For Future Reference

- This easy-to-use manual will guide you in getting the best use of your cooler.
- Remember to record the model number and the serial number. This information can be found on the inside of your cooler.
- Keep your receipt with this manual for future warranty service.

Model #: _____

Serial #: _____

Date of Purchase: _____

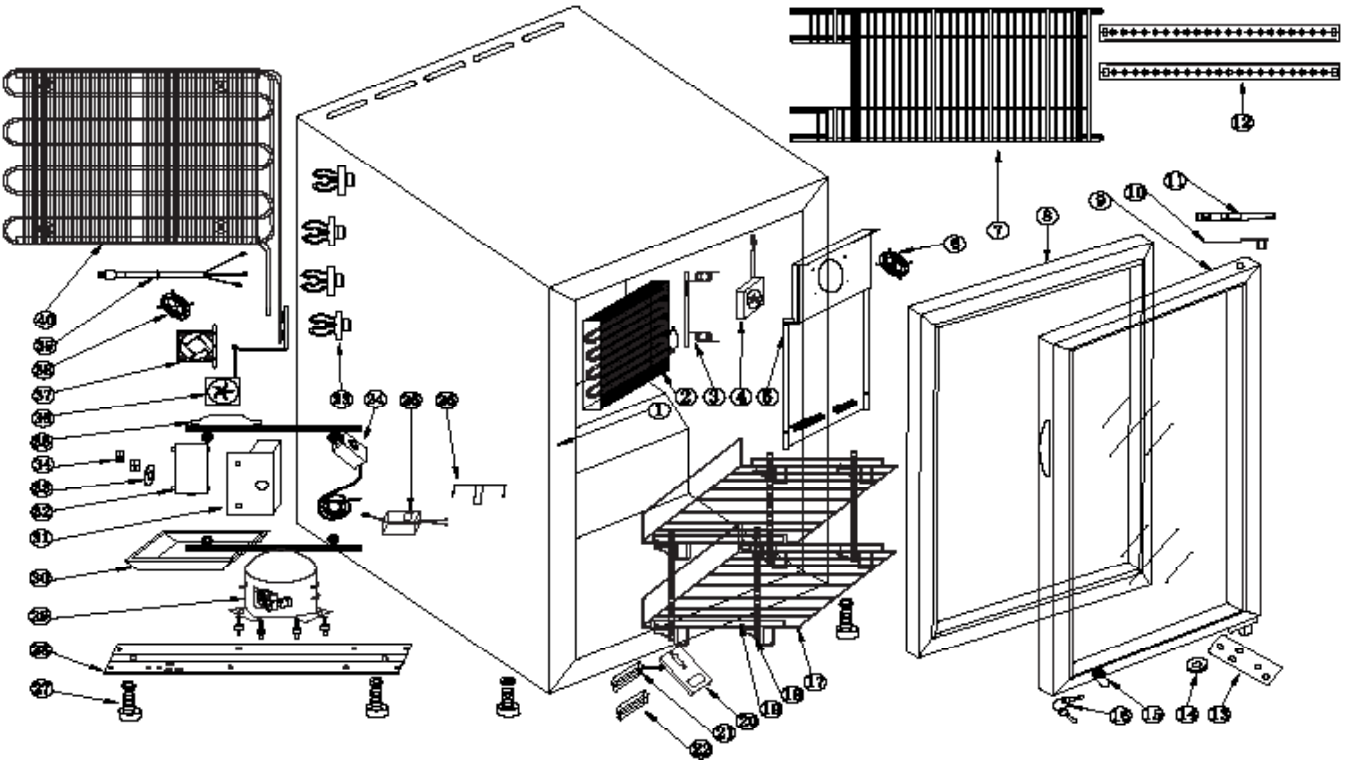


GS2.5 (r600a, ES4) Parts List
Not sure of voltage. It seemed like I had to
choose the ES4, or 110V.

I didn't find a G2.5 (r600a, ES4)
Parts List in the r600a "Parts List
Specs" folder.



PARTS & IDENTIFICATION
GS2.5



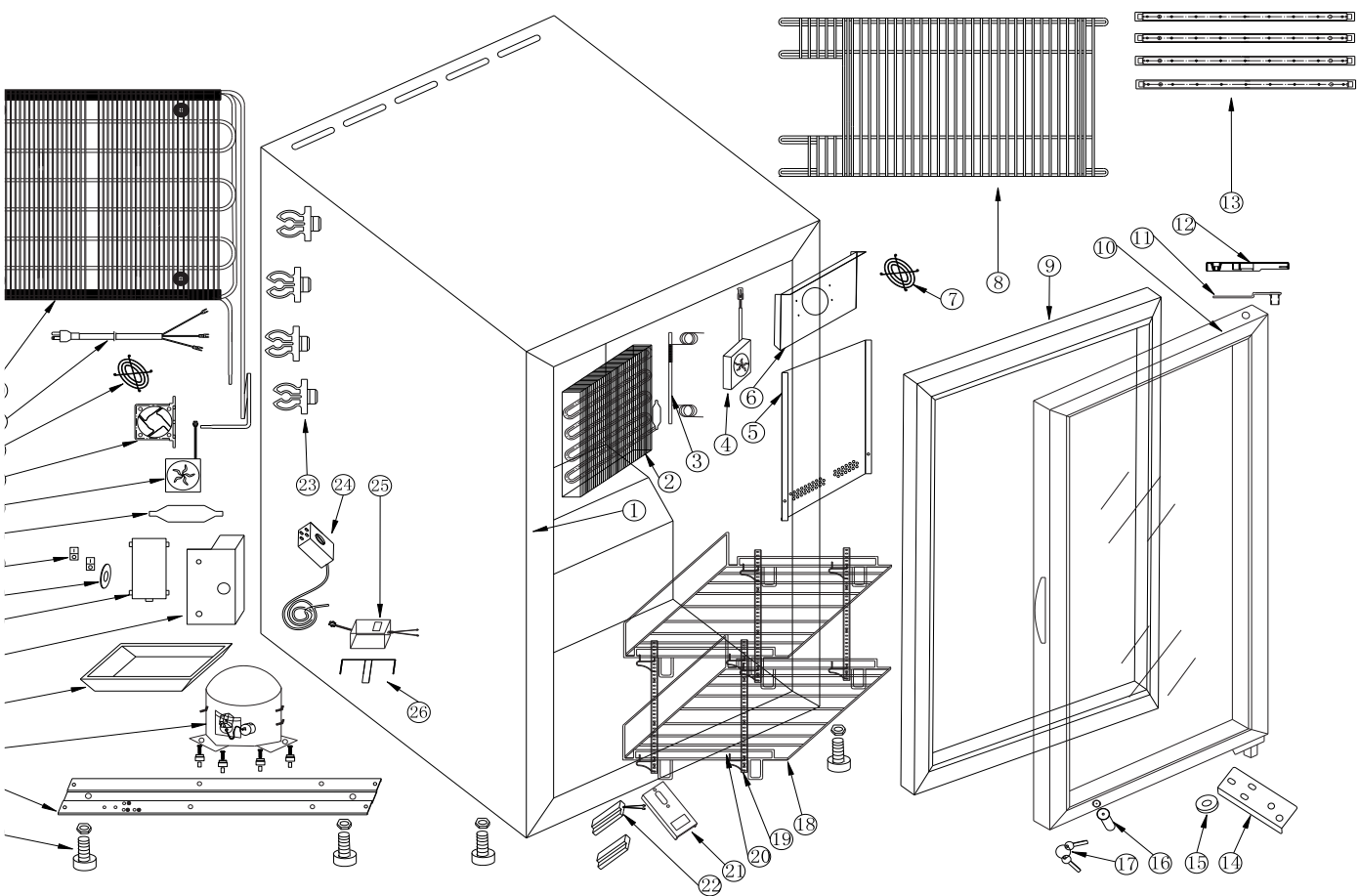
- | | | | |
|-------------------------|-------------------------|---------------------------|---------------------------|
| 1. Cooler Cabinet | 11. Hinge Cover | 21. Magnetic Switch | 31. Thermostat Box |
| 2. Evaporator | 12. LED (2) | 22. Magentic Sensor | 32. Thermostat Box Cover |
| 3. Circle Pipe | 13. Bottom Hinge | 23. Condenser Support (4) | 33. Thermostat Label |
| 4. Evaporator Fan | 14. Bottom Hinge Washer | 24. Thermostat | 34. Door Light Switch (2) |
| 5. Evaporator Safeguard | 15. Lock | 25. Transformer | 35. Filter Drier |
| 6. Evaporator Fan Cover | 16. Key (2) | 26. Transformer Box | 36. Condenser Fan |
| 7. Rear Grill | 17. Large Shelf (2) | 27. Leveling Leg (4) | 37. Condenser Fan Cover |
| 8. Door Gasket | 18. Shelf Strip (4) | 28. Compressor Base | 38. Fan Cover |
| 9. Glass Door | 19. Shelf Clip (8) | 29. Compressor | 39. Power Cord |
| 10. Top Hinge | 20. Lockpin | 30. Drip Pan | 40. Condenser |

G3-GS3 (r600a, 110V) Parts List
No ES logo

G-2.5/GS-2.5 G-3/G-S3



PARTS & IDENTIFICATION
G3-GS3



- | | | | |
|--------------------------|-------------------------|------------------------|--------------------------|
| Foam Cabinet | 11. Top Hinge | 21. Lockpin | 31. Thermostat Box |
| Evaporator | 12. Hinge Cover | 22. Magentic Switch | 32. Thermostat Box Cover |
| Return pipe | 13. LED Lights (4) | 23. Consender Clip (4) | 33. Thermostat Label |
| Evaporator Fan | 14. Bottom Hinge | 24. Thermostat | 34. Switch (2) |
| Evaporator Safeguard | 15. Bottom Hinge Washer | 25. Transformer 1A | 35. Filter Drier |
| Evaporator Fan Safeguard | 16. Lock | 26. Transformer Box | 36. Condenser Fan |
| Evaporator Fan Cover | 17. Key (2) | 27. Leveling Leg (4) | 37. Condenser Fan Cover |
| Rear Grill | 18. Large Shelf (2) | 28. Compressor Base | 38. Condenser Fan Cover |
| | 19. Dilecters (4) | 29. Compressor | 39. Power Cord |



SAFETY INSTRUCTIONS

1. To reduce the risk of fire, electric shocks, or injury when using your cooler, please note the following basic precautions:
2. Never clean appliance parts with flammable fluids.
3. Do not store or use gasoline or any other flammable vapors and liquids in the vicinity of this or any other appliance. The fumes can cause a fire or explosion.
4. As with all electrical appliances, please consult a licensed repair technician for any repairs.
5. Do not block the ventilation holes located on the top of the cabinet.

Installation

- Keep cooler in an upright position for 1-hour prior to use. This is essential for proper operation. If the cooler is transported in the horizontal position, the cooler must be returned to the upright position and not plugged in for 1 hour.
- Remove all the packing material before using your cooler.
- Clean the interior surface with a soft cloth and lukewarm water.
- If the cooler is transported in the horizontal position, check the drain pan and ensure that it is properly positioned above the compressor.
- For proper operation, place the cooler on a dry, level surface.
- Place the cooler at least 4" away from any walls. Otherwise, this could cause damage to the electrical cord and block the air circulation to the appliance.
- Do not block the air intake that ventilates the condenser unit.

Electric Connection

- This model operates with an 110-120V/60Hz power supply. Check the electrical outlet for proper voltage.
- Warning: Plug unit directly into wall outlet. Do not use an extension cord or any other multiple connectors.
- For your safety, plug the unit into a grounded wall outlet.

Start

- Plug the cooler into the electrical outlet. For optimum performance, run cooler for 3 hours prior to use.
- Temperature Control: Do not adjust the temperature control. The temperature control is factory set to provide maximum performance. If really necessary, you can turn the thermostat by screw driver clockwise to have lower temperature inside the cooler.

PLEASE SAVE THESE INSTRUCTIONS!

DANGER!

PROPER DISPOSAL OF THE REFRIGERATOR

Pre-Caution, Non-Operating Coolers Should Have:

1. Door removed.
2. Shelves kept in place in order to prevent any small child from climbing inside cooler.

For Proper Disposal of Cooler:

Distributors/retailers need to contact a qualified service technician:

1. To recover all refrigerant from the cooler
2. To remove the compressor or remove the oil from the compressor

Then the distributor/retailer can contact their local metal recycling center to pick up the remaining cabinet, shelves, etc. By law, disposal of hazardous wastes may be subject to fines and imprisonment under the provisions of the environmental regulations. For more information please visit: <http://www.epa.gov/osw/hazard/index.htm>

MAINTENANCE

Cleaning

- Before cleaning the appliance, always remember to unplug it.
- Unplug the cooler at the electrical outlet; never pull the service cord.
- Do not use sharp or pointed objects for cleaning.
- Clean the inside cabinet of the cooler with a clean damp cloth. Avoid damage by using non-abrasive and non-flammable cleaning products.
- Clean the condenser at least once a month with a vacuum cleaner or a brush to eliminate the dust accumulation.

Power Failure

- Please minimize the frequency of opening the door during a power failure.
- If your cooler is unused for an extended period of time, unplug, empty, and clean your cooler and keep the door open to avoid condensation, formation of mold, or odors.

Moving The Cooler

- Empty the unit.
- Secure all loose parts inside the cooler.
- Tape the door shut.
- During transportation, make sure that the cooler is in an upright position.

Drip Pan

- During normal compressor cycle, water will drain into the drain pan and evaporate.
- To clean, gently pull the drain pan towards you and remove. Slowly reinstall it after cleaning.

LEVELING

- Place the cooler on a dry, level surface.
- Unit must be leveled for proper operation, this will help prevent condensation.
- The cooler should be leveled front to back and side to side with a level.



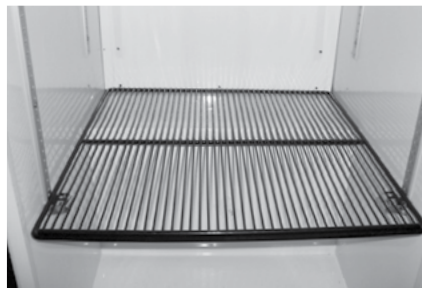
SHELVING INSTALLATION



Shelves are secured in place with zip ties. Cut zip ties to adjust shelves as desired.



Securely insert shelf clips into pilasters.



Shelf clips should be level so shelf lays flat.

G2.5/GS-2.5 maximum load per shelf is 26 lbs/11.8 kg
G-3/GS-3 maximum load per shelf is 34 lbs/15.4221 kg

Display refrigerators can be loaded within the shelf dimensions from the front to back side. They can also be loaded in any space from the bottom to the top interior cabinet. Do not allow product to block the evaporator fan cover because the evaporator fan helps the cooler to ventilate properly.

TROUBLESHOOTING

The following are NOT malfunctions:

Situation	Causes
Liquid flowing noise within cooler	<ul style="list-style-type: none"> This is the sound of the cooling agent flowing through the pipes.
Refrigeration system is shutdown for longer periods of time while temperature inside is still very low	<ul style="list-style-type: none"> This refrigerator is well insulated and can maintain a relatively ambient temperature.
Condensation on door/lid	<ul style="list-style-type: none"> This may be due to a high indoor humidity or the cooler's temperature is set too low. Wipe the door dry with a towel.

- 1 This refrigerator has been designed and manufactured according to National standards. If there are any questions during use, refer to this operation manual to help troubleshoot problems.
- 2 When disposing of the cooler, please remove the door/lid and lock assembly to avoid children accidentally becoming trapped inside the cooler.

Prior to calling service, check the following:

Issues	Solutions
Cooler is not working properly	<p>Please check power supply:</p> <ul style="list-style-type: none"> • Check the electrical outlet for power, and that the plug is properly inserted. • Check to see if the circuit breaker is tripped or the fuse is blown. • Check if the condenser is free of dirt and debris. • Check for low voltage
Cooler is not keeping product cool	<ul style="list-style-type: none"> • Provide ample space between all products to ensure proper circulation of air. • Keep unit away from direct sunlight or other heating source. • Keep the door closed as often as possible. • Be certain the cooler is not touching external objects or walls.
Excessive noise	<ul style="list-style-type: none"> • Be certain the cooler is placed on a level surface. • Be certain the cooler is not touching external objects or walls.
Compressor turns on and off frequently	<ul style="list-style-type: none"> • The room temperature is higher than normal. • The door is not closed completely. • The door gasket is not sealed properly. • There is insufficient clearance around the cooler. • The thermostat is not set properly. • The frequency of cycling will be reduced when all of the product reaches the set temperature.

AFTER SALES SERVICE

Any product has the possibility of malfunction. Please observe the cooler's operation and any changes to product being stored. If there are any abnormal cases, refer to the table below. If there is still no change after following the below instructions, please inform our service center in a timely manner to avoid a further loss of the unit.

Information to provide to your qualified service professional:

- Serial number from the interior wall of the cooler
- Coolers' installation address and contact information
- Installation location hours and operation
- Nature of problem
- Any reports of power interruptions
- Recent service or maintenance completed on the cooler
- Has the cooler been relocated from original installation location
- Clear access to the cooler
- Coolers' instruction manual

SPECIFICATIONS

MODEL	VOLUME(L)	RATED VOLTAGE	RATED CURRENT	REFRIGERANT
GS-2.5-N234B	69.37	110V/60Hz	2A	R600a
GS-2.5-W234B				
GS-2.5-B234B				
GS-2.5-P234B				
GS-2.5-LN234B				
GS-2.5-LW234B				
GS-2.5-LB234B				
GS-2.5-LP234B				
GS-2.5-0234B				
GS-2.5-L0234B				
GS-2.5-2234B				
GS-2.5-2W234B				
GS-2.5-2B234B				
GS-2.5-2P234B				
GS-2.5-L2W234B				
GS-2.5-L2B234B				
GS-2.5-L2P234B				
GS-2.5-A234B				
GS-2.5-LA234B	98.5	110V/60Hz	1.4A	R600a
GS-3-N234B				
GS-3-W234B				
GS-3-B234B				
GS-3-P234B				
GS-3-0234B				
GS-3-2234B				
GS-3-A234B				
GS-3-2W234B				
GS-3-2B234B				
GS-3-2P234B				
NSF/ASNI-7: Type II Display Refrigerator		A display refrigerator intended for use in an area where the environmental conditions are controlled and maintained so that the ambient temperature does not exceed 80°F (27°C).		



CAUTION FLAMMABLE REFRIGERANT

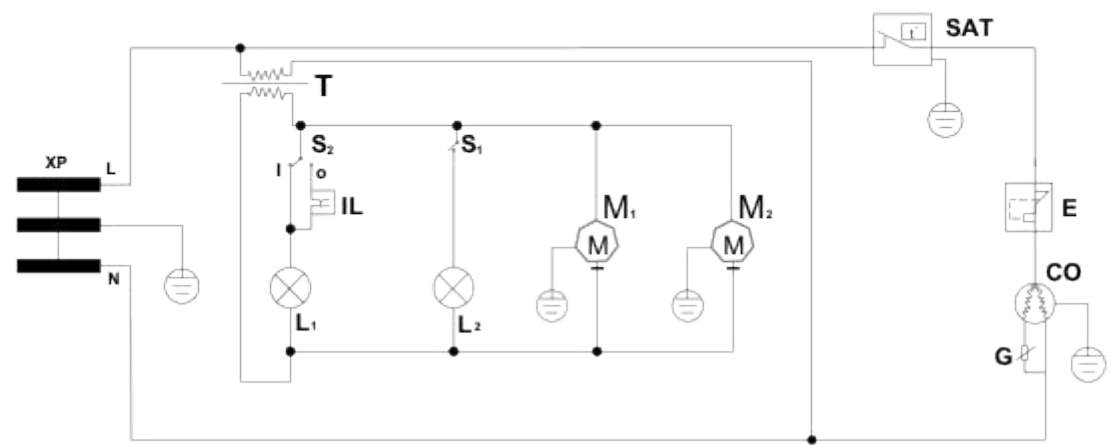
- **DANGER - Risk Of Fire Or Explosion.** Flammable Refrigerant Used. To Be Repaired Only By Trained Service Personnel. Do Not Puncture Refrigerant Tubing.
- **CAUTION - Risk Of Fire Or Explosion.** Flammable Refrigerant Used. Consult Repair Manual/Owner’s Guide Before Attempting To Install or Service This Product. All Safety Precautions Must be Followed.
- **CAUTION - Risk Of Fire Or Explosion.** Dispose Of Properly In Accordance With Federal Or Local Regulations. Flammable Refrigerant Used.
- **CAUTION - Risk Of Fire Or Explosion** Due To Puncture Of Refrigerant Tubing; Follow Handling Instructions Carefully. Flammable Refrigerant Used.
- **CAREFUL** - Handling, moving and operating of the refrigerator or freezer to avoid either damaging the refrigerant tubing, or increasing the risk of a leak.
- **CAUTION** - Component parts shall be replaced with like components and that servicing shall be done by factory authorized service personnel, so as to minimize the risk of possible ignition due to incorrect parts or improper service.

Switch Status	Door Side Light Switch	Door Logo Light Switch	Remark
I / I	ON	ON	Door Lights ON and Door logo ON
I / O	ON	OFF	Door Lights ON and Door logo OFF
O / I	OFF	ON	Door Lights OFF and Door logo ON, Door Lights turn ON when door opens
O / O	OFF	OFF	Door Lights OFF and Door logo OFF, Door Lights turn ON when door opens



CIRCUIT DIAGRAM

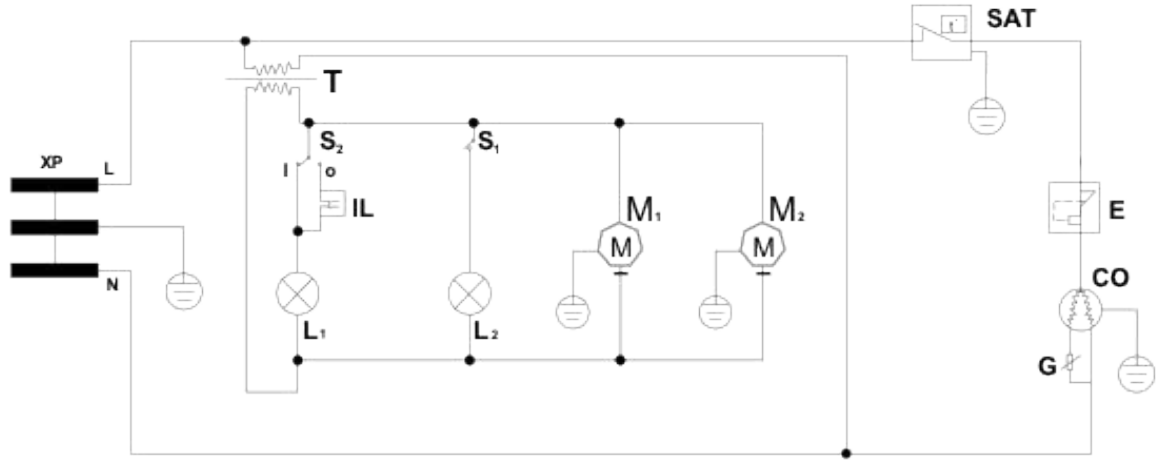
GS-2.5-N234B, GS-2.5-W234B, GS-2.5-B234B,GS-2.5-P234B,
GS-2.5-LN234B, GS-2.5-LW234B, GS-2.5-LB234B,GS-2.5-LP234B



- | | |
|---------------------|---------------------------|
| XP - Plug | CO - Compressor |
| G - Starter | E - Overload Protector |
| L1, L2 - LED Lamp | SAT - Thermostat |
| T - Transformer | IL - Magnetism Switch |
| M1 - Evaporator Fan | S1 - Door LED Switch |
| M2 - Condenser Fan | S2 - Sidepiece LED Switch |

CIRCUIT DIAGRAM

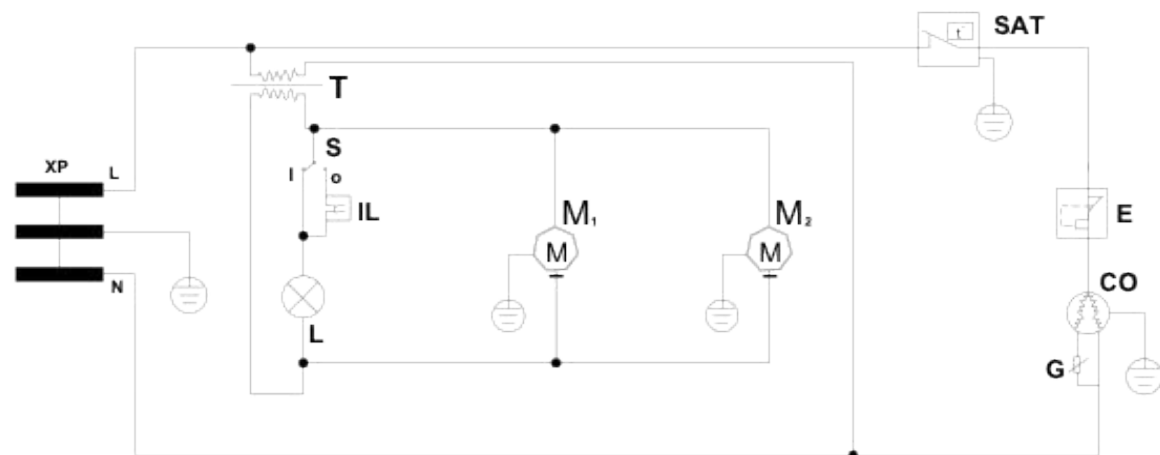
GS-2.5-2234B, GS-2.5-2W234B,GS-2.5-2B234B,GS-2.5-2P234B,
GS-2.5-L2W234B,GS-2.5-L2B234B,GS-2.5-L2P234B



- | | |
|---------------------|---------------------------|
| XP - Plug | CO - Compressor |
| G - Starter | E - Overload Protector |
| L1, L2 - LED Lamp | SAT - Thermostat |
| T - Transformer | IL - Magnetism Switch |
| M1 - Evaporator Fan | S1 - Door LED Switch |
| M2 - Condenser Fan | S2 - Sidepiece LED Switch |

CIRCUIT DIAGRAM

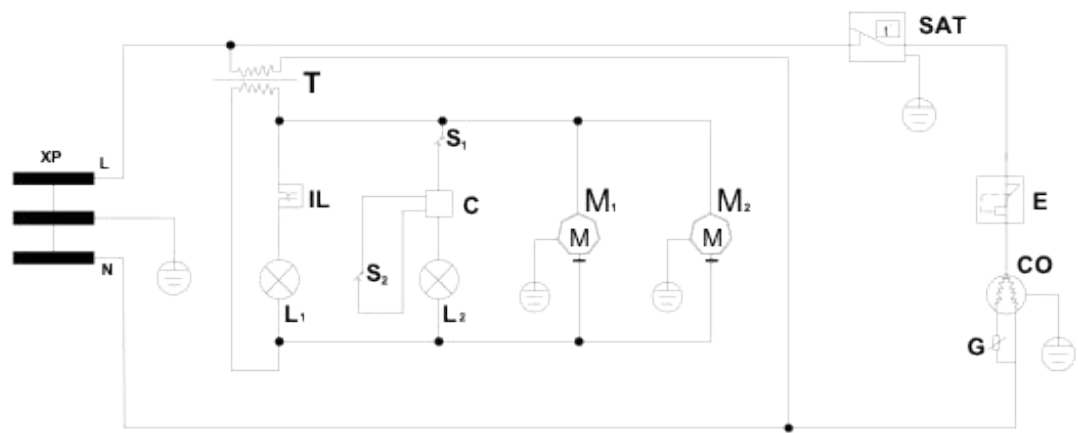
GS-2.5-0234B, GS-2.5-L0234B



- | | |
|---------------------|---------------------------|
| XP - Plug | CO - Compressor |
| G - Starter | E - Overload Protector |
| L1 - LED Lamp | SAT - Thermostat |
| T - Transformer | IL - Magnetism Switch |
| M1 - Evaporator Fan | S2 - Sidepiece LED Switch |
| M2 - Condenser Fan | |

CIRCUIT DIAGRAM

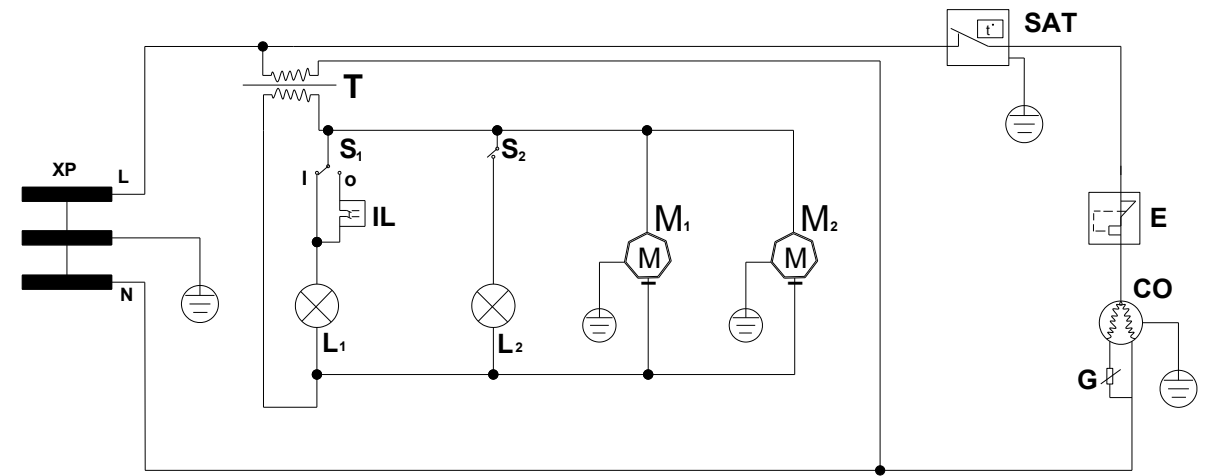
GS-2.5-A234B, GS-2.5-LA234B



- | | |
|---------------------|--------------------------------|
| XP - Plug | CO - Compressor |
| C - Control Panel | E - Overload Protector |
| G - Starter | SAT - Thermostat |
| L1, L2 - LED Lamp | IL - Magnetism Switch |
| T - Transformer | S1 - Door LED Switch |
| M1 - Evaporator Fan | S2 - System Control LED Switch |
| M2 - Condenser Fan | |

CIRCUIT DIAGRAM

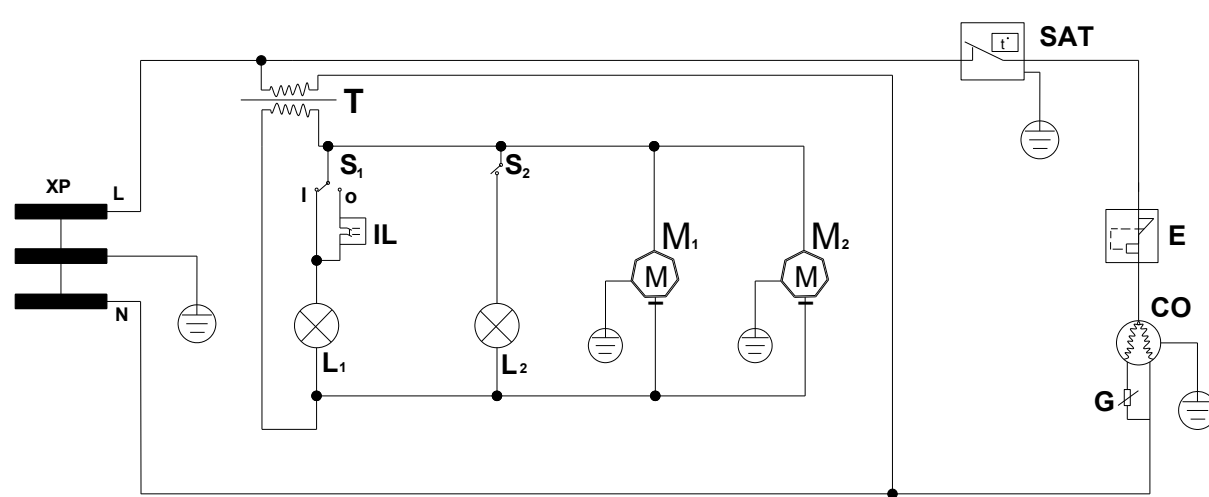
GS-3-N234B, GS-3-W234B,GS-3-B234B, GS-3-P234B



- | | |
|---------------------|-----------------------------|
| XP - Plug | CO - Compressor |
| G - Starter | E - Overload Protector |
| L1, L2 - LED Lamp | SAT - Thermostat |
| T - Transformer | IL - Magnetism Switch |
| M1 - Evaporator Fan | S1 - Door Side Light Switch |
| M2 - Condenser Fan | S2 - Logo Light Switch |

CIRCUIT DIAGRAM

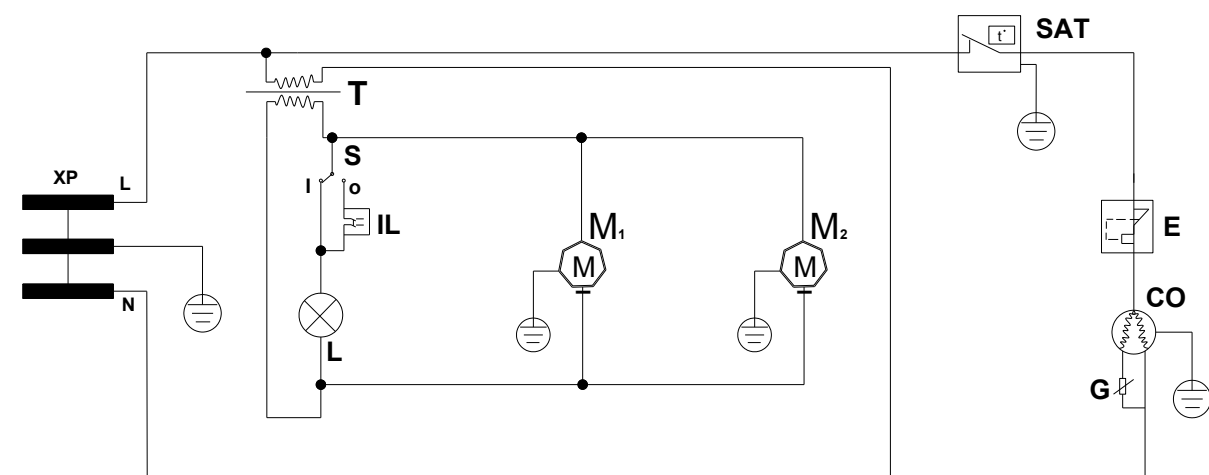
GS-3-2234B, GS-3-A234B, GS-3-2W234B, GS-3-2B234B, GS-3-2P234B



- | | |
|---------------------|-----------------------------|
| XP - Plug | CO - Compressor |
| G - Starter | E - Overload Protector |
| L1, L2 - LED Lamp | SAT - Thermostat |
| T - Transformer | IL - Magnetism Switch |
| M1 - Evaporator Fan | S1 - Door Side Light Switch |
| M2 - Condenser Fan | S2 - Logo Light Switch |

CIRCUIT DIAGRAM

GS-3-0234B



- | | |
|---------------------|----------------------------|
| XP - Plug | CO - Compressor |
| G - Starter | E - Overload Protector |
| L - LED Lamp | SAT - Thermostat |
| T - Transformer | IL - Magnetism Switch |
| M1 - Evaporator Fan | S - Door Side Light Switch |
| M2 - Condenser Fan | |





Innovative DisplayWorks, Inc.

To locate the distributor in your area go to: <http://www.idw.global/contact/#distributors>